



## Pine Grove, Penenden Heath, Maidstone, ME14 2AJ

- CHAIN FREE
- DRIVEWAY
- IN NEED OF MODERNISATION THROUGHOUT
- SPACIOUS GARDEN
- GARARGE
- CLOSE PROXIMITY TO MAIDSTONE TOWN AND AMENITIES

**Guide Price £490,000**



## Pine Grove, Penenden Heath, Maidstone, ME14 2AJ



Located in the sought-after area of Pine Grove, Penenden Heath in Maidstone, this three-bedroom home offers a genuine opportunity for buyers looking for a full renovation project. Set behind a quaint porch, the property opens into a spacious hallway which leads through to the main living areas.

The living room is a standout space, featuring bay windows that bring in plenty of natural light and offer a pleasant outlook. Just off the living room is a dining room, which in turn leads into a conservatory overlooking the rear garden. Although the property requires significant updating, the layout provides a great foundation for modern family living.

A separate kitchen is positioned away from the dining room, with a downstairs WC located off the kitchen area for added convenience.



Upstairs, the property offers three bedrooms and a family bathroom. The main bedroom benefits from bay windows, creating a bright, airy space, while the second and third bedrooms also provide generous room for furniture and storage. The layout overall is practical and easy to work with for future improvements.

One of the key features of the home is the large rear garden — an excellent space for those who enjoy gardening, outdoor projects, or simply relaxing in the fresh air. The property is also chain-free, allowing for a smoother purchase process.



Conveniently situated close to Maidstone town centre, transport links, and local amenities, the location is ideal for commuters and those wanting easy access to shops, restaurants and leisure activities. Offering great potential in a prime area, this property is a rare opportunity for buyers ready to take on a project and transform it into their ideal home.



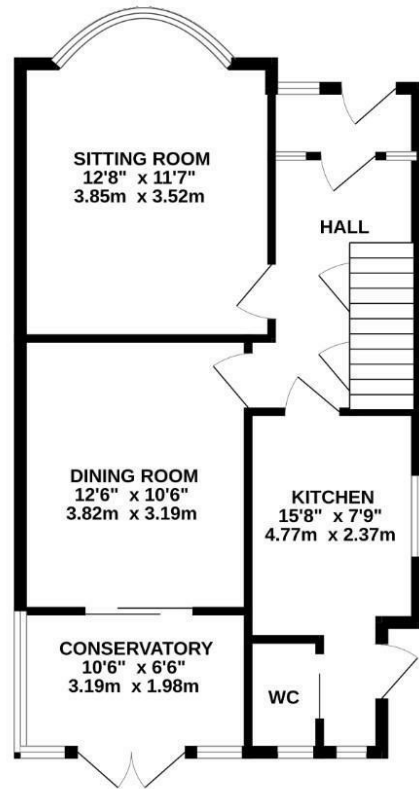


Pine Grove, Penenden Heath, Maidstone, ME14 2AJ

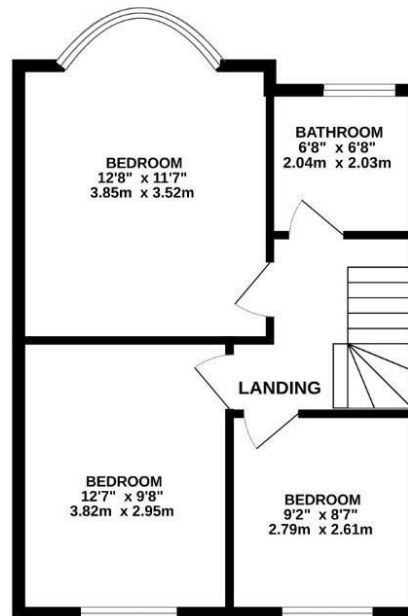




GROUND FLOOR



1ST FLOOR



Whilst every attempt has been made to ensure the accuracy of the floorplan contained here, measurements of doors, windows, rooms and any other items are approximate and no responsibility is taken for any error, omission or mis-statement. This plan is for illustrative purposes only and should be used as such by any prospective purchaser. The services, systems and appliances shown have not been tested and no guarantee as to their operability or efficiency can be given.  
Made with Metropix 02025

### Viewings

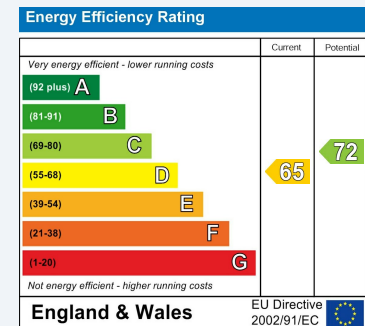
Please contact Maidstone@hunters.com, if you wish to arrange a viewing appointment for this property or require further information.

### Valuations

For a valuation of your property, please email the team with your property details, contact information and the times you are available.

## ENERGY PERFORMANCE CERTIFICATE

The energy efficiency rating is a measure of the overall efficacy of a home. The higher the rating the more energy efficient the home is and the lower the fuel bills will be.



These particulars are intended to give a fair and reliable description of the property but no responsibility for any inaccuracy or error can be accepted and do not constitute an offer or contract. We have not tested any services or appliances (including central heating if fitted) referred to in these particulars and the purchasers are advised to satisfy themselves as to the working order and condition. If a property is unoccupied at any time there may be reconnection charges for any switched off/disconnected or drained services or appliances - All measurements are approximate.

**THINKING OF SELLING?** If you are thinking of selling your home or just curious to discover the value of your property, Hunters would be pleased to provide free, no obligation sales and marketing advice. Even if your home is outside the area covered by our local offices we can arrange a Market Appraisal through our national network of Hunters estate agents.